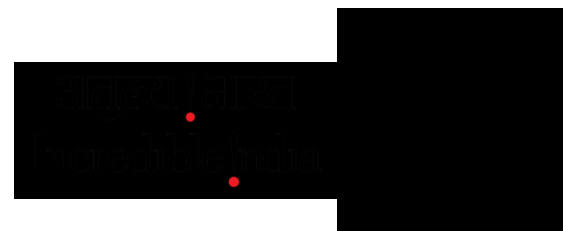


# New Tourism Chapter

Implementation Stages of the CHSE Protocol (Cleanliness, Health, Safety and Environment Sustainability)

**Dr. Anang Sutono, CHE.**

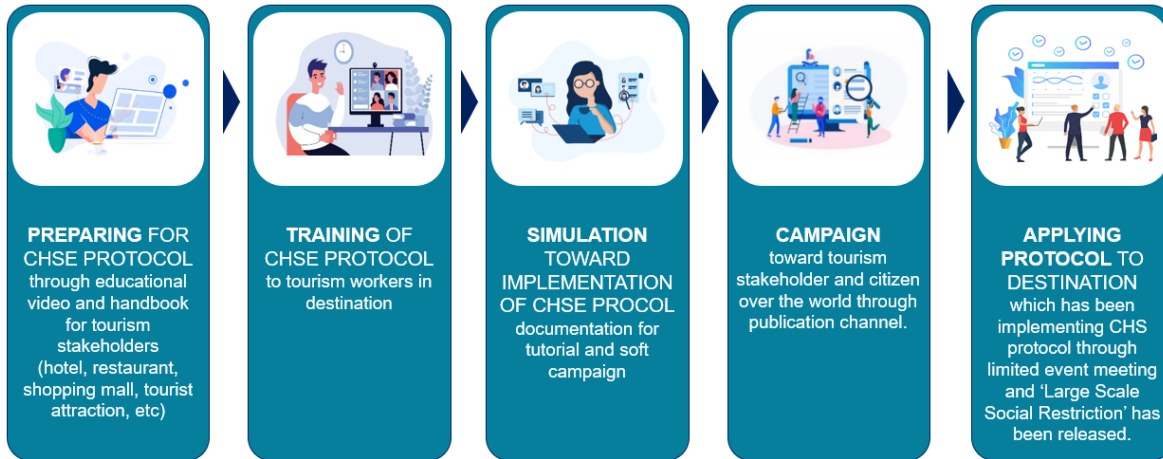
Assoc. Prof. of STP NHI Bandung  
Former Senior Advisor for The Minister of Tourism  
Founder of Mandapa Tourism Indonesia



# New Chapter of Tourism Post COVID-19 Pandemic

Issues and Trends

## Implementation Stages of the CHSE Protocol (Cleanliness, Health, Safety and Environment Sustainability)



New Tourism Chapter

Input

Process

Output

Outcome

# Issues and Trends



## Global Code Of Ethics For Tourism

Tourism is a genuine driver of solidarity and development. Let us all fully harness its power to bring people and communities together, abiding by the Global Code of Ethics for Tourism.

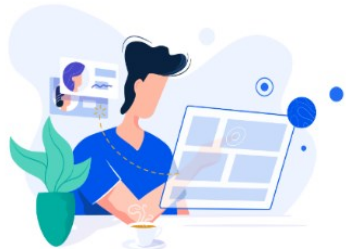
## Tourism is Core Economy

Over the decades, tourism has experienced continued growth and deepening diversification to become one of the fastest growing economic.

## Consumer Behavior New Normal

The pandemic is far from over, but we can take decisive action to protect jobs and safeguard the many benefits tourism delivers, both for people and planet.

# IMPLEMENTATION STAGES OF THE CHSE PROTOCOL



**PREPARING FOR CHSE PROTOCOL** through educational video and handbook for tourism stakeholders (hotel, restaurant, shopping mall, tourist attraction, etc)



**TRAINING OF CHSE PROTOCOL** to tourism workers in destination



**SIMULATION TOWARD IMPLEMENTATION OF CHSE PROCOL** documentation for tutorial and soft campaign



**CAMPAIGN** toward tourism stakeholder and citizen over the world through publication channel.



**APPLYING PROTOCOL TO DESTINATION** which has been implementing CHS protocol through limited event meeting and 'Large Scale Social Restriction' has been released.



**धन्यवाद - DHANYAVAAD**

**TERIMA KASIH - THANK YOU**